

## REN

### NOZZLE

The REN is highly suitable for Plymovent fixed extractors and exhaust reels. The REN is designed to take in ambient cooling air thereby reducing the exhaust emission temperature.

The nozzle is made up of a powder coated metal pipe and moulded, high temperature resistant rubber. A CO outlet is provided for measuring CO emissions.



### APPLICATIONS

The REN is intended to be used for the following applications:

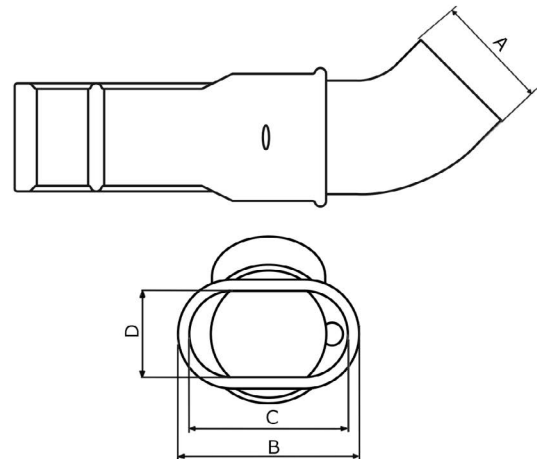


- Fleet maintenance service facilities and auto service garages in which gasoline or diesel-powered vehicles are generating hazardous exhaust fumes.

### SPECIFICATIONS

■ Physical dimensions and properties	
Material	Metal tube / Nitrile butadiene rubber (NBR)
Color	Black (powder coated)
Diameters available	3, 4, 5, 6 and 8 in. (75, 100, 125, 150 and 200 mm)*
CO Outlet	Contains a CO outlet to measure CO emissions
Optional Damper	An optional damper is included for the REN nozzle. See Remaining Specifications for REN article number with damper (REND)
■ Ambient conditions	
Operating Temperature	up to 300°F (150°C) continuous
■ Clamps	
A standard hose clamp is provided. If you are using REN with an external helix hose, you will need to order a bridge clamp.	
■ Product combinations	
Hose Drops / Reels	<ul style="list-style-type: none"> <li>• FE/FEB</li> <li>• SER/MER/MHR/MSHR</li> </ul>
■ Order information	
Article no.	see remaining specifications
Number (package)	1

### DIMENSIONS



Product Name	A	B	C	D
REN-100-115	Ø 4 in. (100 mm)	3 in. (76 mm)	5.5 in. (140 mm)	6.3 in. (160 mm)
REG-100-160	Ø 4 in. (100 mm)	4 in. (102 mm)	7.7 in. (195 mm)	8.5 in. (215 mm)
REG-125-160	Ø 5 in. (125 mm)	4 in. (102 mm)	7.7 in. (195 mm)	8.5 in. (215 mm)
REC-150-160	Ø 6 in. (150 mm)	4 in. (102 mm)	7.7 in. (195 mm)	8.5 in. (215 mm)

\*The 3 in. (75 mm) is not available in North America.

## FEATURES & BENEFITS

- Metal construction
- Spring-loaded rubber lip that closes when not in use
- Ideal for dynotesting (in which a chassis dynamometer is used to measure engine and wheel horsepower, intake temperatures and more) and heavy-duty trucks.
- Pulls in ambient cooling air, reducing the exhaust emission temperature.

Airflow Volume: General Guidelines		
Vehicles Serviced	cfm (m³/h)	Hose Diameter
Automobile	270-300 (460-510)	4 in. (100 mm)
Motorcycle	600-650 (1020-1105)	6 in. (150 mm)
Trucks (Public Works, Rental Fleets, etc.)	500-550 (850-935)	5 in. (125 mm)
Heavy Duty Trucks	650-800 (1100-1360)	6 in. (150 mm)
Off-Road (Constr., Compressor Tests, etc.)	1000-1400 (1700-2400)	8 in. (200 mm)

Note: These guidelines will vary based on types of vehicles and service work being performed. If the facility conducts Dyno Testing, CFM will vary based on types of vehicles and length of test period. Please refer to the Plymovent Vehicle Exhaust Extraction System Design Guide for more details.

## REMAINING SPECIFICATIONS

Art. no.	Product Name	Dimensions	Weight
0000109660 90155-1011  With Damper: 0000109670	REN-100-115	Ø 4 in. (100 mm) hose connection; oval is 3.6 in. x 6.1 in. (91 mm x 155 mm)	1.9 lbs (0,85 kg)
00000105258 90160-1011  With Damper: 0000109671	REN-100-160	Ø 4 in. hose connection; oval is 4.6 in. x 8.3 in. (117 mm x 211 mm)	3.3 lbs (1,5 kg)
0000105250 90165-1011  With Damper: 0000109672	REN-125-160	Ø 5 in. hose connection; oval is 4.6 in. x 8.3 in. (117 mm x 211 mm)	2.8 lbs (1,25 kg)
0000109673 90171-1011  With Damper: 0000109674	REN-150-160	Ø 6 in. hose connection; oval is 4.6 in. x 8.3 in. (117 mm x 211 mm)	3.6 lbs (1,65 kg)

Plymovent Authorized Distributor:

Product type	REN™
Article no.	see remaining specifications
Product category	nozzles
Version	270818/1

Always check the latest version on [www.plymovent.com](http://www.plymovent.com)